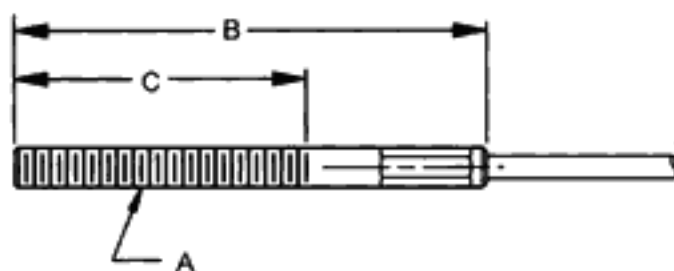
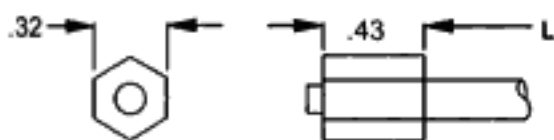


1500 Pound Series

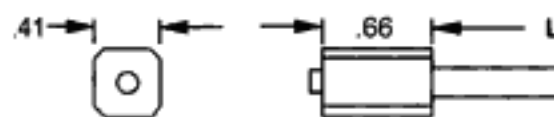
Threaded
End Fitting



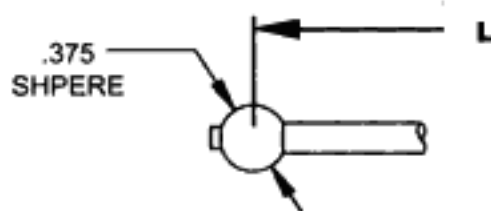
PART NO.	A	B	C
TE 504	5/16-24	3.62	2.25
TE 504-6	5/16-24	2.00	1.00
TE 504-007	5/16-24	6.00	4.63
TE 506	3/8-24	2.62	1.50
TE 523-001	1/4-28	3.62	2.50



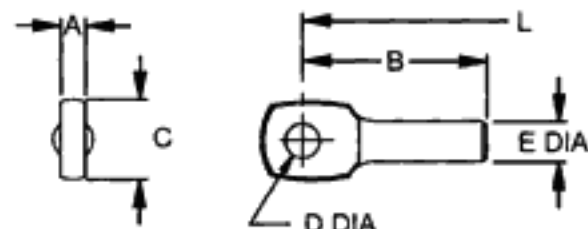
CABLE STOP
PART NO. BE 520
(MAX-LOAD 2,000 lbs)



CABLE STOP
PART NO. BE 501



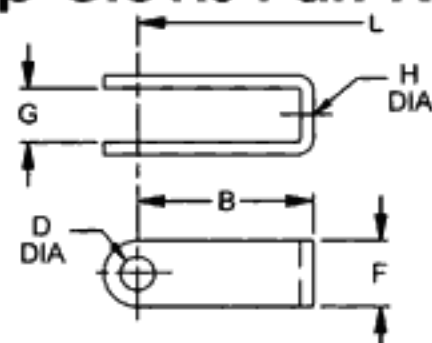
BALL END
PART NO. BT 821
(MAX-LOAD 2,000 lbs)



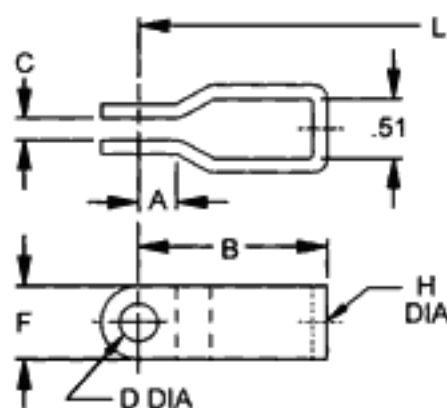
EYE END

PART NO.	A	B	C	D	E
157-047-000	.235	1.81	.75	.323	.375
EE9158	.240	1.60	.75	.500	.437

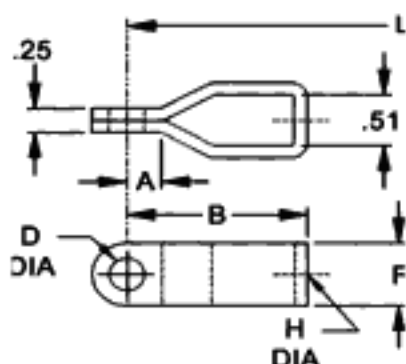
Strap Clevis Part Numbers for both 1500 and 3000 series.



OPEN STRAP CLEVIS	B	D	F	G	H
CS 540	1.62	.31	.62	.43	.266
CS 540-1	1.62	.31	.62	.51	.266
CS 540-6	2.50	.38	.75	.57	.386
CS 540-7	2.50	.31	.62	.51	.266
CS 541	1.94	.38	.75	.51	.266
CS 541-3	1.94	.38	.75	.51	.323
CS 541-5	2.00	.38	.75	.51	.266
CS 541-7	2.50	.38	.75	.51	.266
CS 541-8	2.50	.38	.75	.51	.323
CS 542*	1.08	.50	1.00	.58	.323



STEP STRAP CLEVIS	A	B	C	D	F	H
CS 550**	.31	1.56	.19	.31	.62	.266
CS 550-1	.31	1.56	.19	.38	.62	.266
CS 550-2	.31	1.56	.19	.31	.62	.316
CS 550-4	.31	1.56	.19	.25	.62	.266
CS 551	.38	1.75	.25	.31	.62	.266
CS 551-1	.38	1.75	.25	.38	.62	.266
CS 551-2	.75	2.38	.25	.31	.62	.316
CS 551-3	.38	1.50	.25	.25	.62	.266
CS 552	.31	2.38	.25	.31	.75	.266
CS 552-1	.31	2.38	.25	.38	.75	.266
CS 552-3	.38	2.38	.25	.43	.75	.316
CS 552-4	.38	2.38	.25	.31	.75	.316
CS 553	.50	1.88	.19	.38	.75	.266



CLOSED STRAP CLEVIS	A	B	D	F	H
CS 562	.31	1.62	.31	.62	.316
CS 563	.28	1.75	.31	.62	.316
CS 564	1.00	2.38	.38	.75	.316

*Use with 5/16 threaded end rod with nuts only
**Not available in 3000