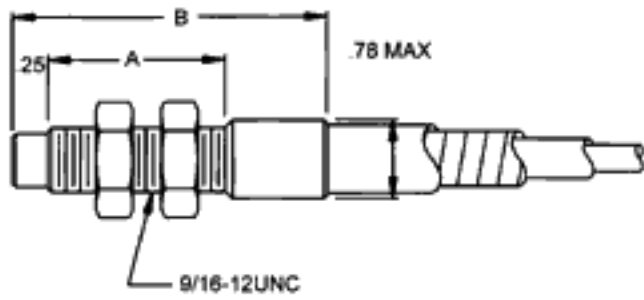
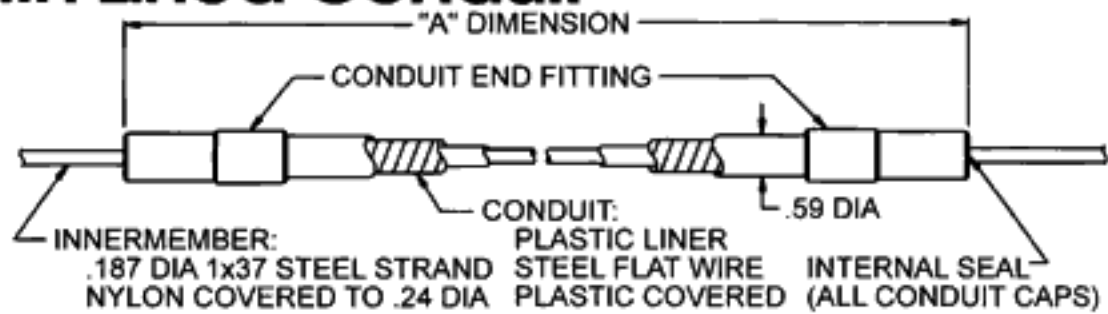


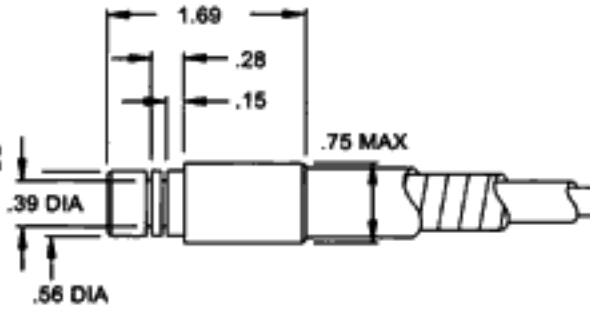
# 3000 Pound Series with Lined Conduit

Ultimate load: 3000 lbs.  
Minimum bend radius: 7"



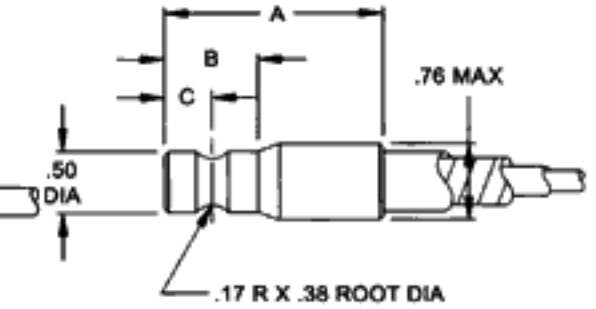
**Threaded Conduit End Fitting**

Part No.	A	B
070	1.4	2.7
071	2.0	3.3



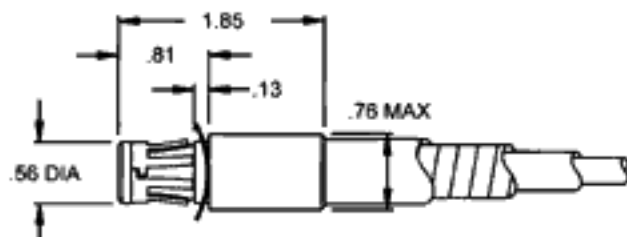
**Grooved Conduit End Fitting**

Part No.	Use E-Clip
074	175-435-025



**Grooved Conduit End Fitting**

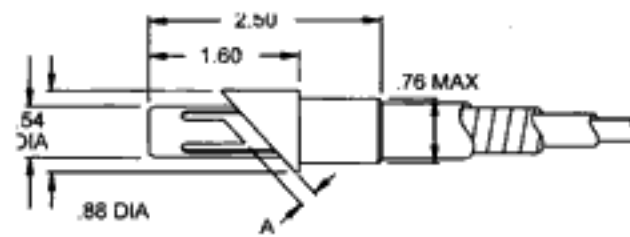
Part No.	A	B	C
072	1.4	2.7	.38
073	2.0	3.3	.44



**Clip-Lock Conduit End Fitting**

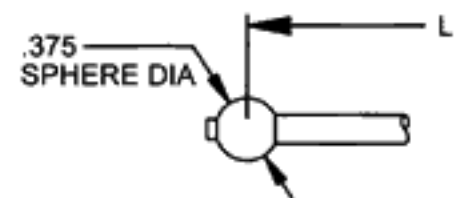
Part No.
075

For .125 or .187 thick material.



**48° Clip-Lock Conduit End Fitting**

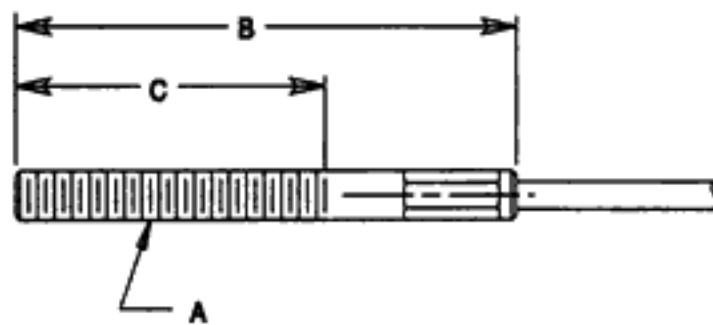
Part No.	A
076	.33
077	.20



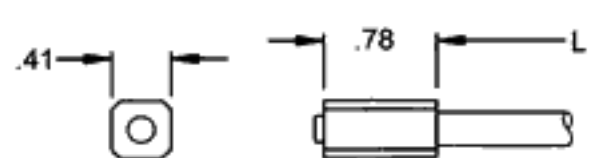
**Ball End**

Part No. BT 822  
(Max-load 2,000 lbs.)

**Threaded End Fitting**

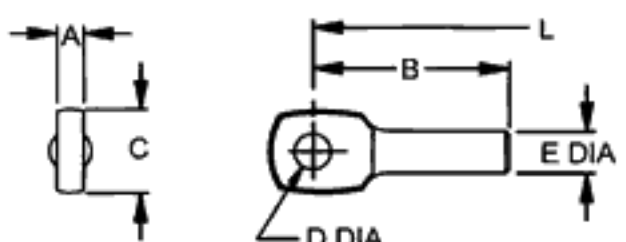


Part No.	A	Swaged	C
TE 505	3/8-24	2.95	2.00
TE 505-1	3/8-24	1.88	1.00
TE 508	3/8-24	2.62	1.50
TE 509-1	3/8-24	4.95	3.75
TE 510-1	5/16-24	2.50	1.50
TE 510-2	5/16-24	3.62	2.24
TE 510-4	5/16-24	4.00	3.00
TE 510-5	1/4-28	3.62	2.50
TE 510-6	5/16-24	2.12	1.00
TE 510-7	5/16-24	2.88	1.50
TE 510-8	5/16-24	5.60	4.47
TE 510-9	5/16-24	3.00	1.91
TE 605	3/8-24	6.00	5.00



**Cable Stop**

Part No. BE 502



**Eye End**

Part No.	A	B	C	D	E
157-047-002	.235	1.81	.75	.323	.375